

DWG. REV.	ECR/NDR NUMBER	REVISED BY	DATE	DESCRIPTION
E	16154	EMC	04-01-19	REPLACED 210-00017 WITH 210-00240 -2X
D	16108	JDM	10-24-18	REPLACED 300-01617 WITH 300-03203, 310-02017 WITH 310-03397, 310-02387 WITH 310-03458, 300-01977 WITH 300-01611, 229-00095 WITH 229-00650. ADDED 100-05436 -2X, 100-05437 -2X, 100-05634 -2X, 100-05635 -2X, 229-00672 -2X MORE CHANGES IN B.O.M.

ALL DIMENSIONS ARE IN INCHES
UNLESS OTHERWISE STATED
TOLERANCES EXCEPT AS NOTED

DECIMALS:

.X ±0.100
.XX ±0.060
.XXX ±0.030
.XXXX ±0.010

ANGLES:

±1°

ALL FORMED ANGLES
EQUAL 90° UNLESS
NOTED OTHERWISE

() INDICATES REFERENCE

THE INFORMATION IN THIS DRAWING IS THE SOLE
PROPERTY OF KARAVAN TRAILERS, INC. ANY
REPRODUCTION IN PART OR WHOLE WITHOUT
THE WRITTEN PERMISSION OF KARAVAN TRAILERS,
INC. IS PROHIBITED

APPROVED BY:

DRAWN BY:

LUCAS WITTALA

DATE:

05-16-12

SHEET:

1 OF 8

SCALE:

N/A

KARAVAN

TITLE:

KDPT-2225-39-TDB-SPRING

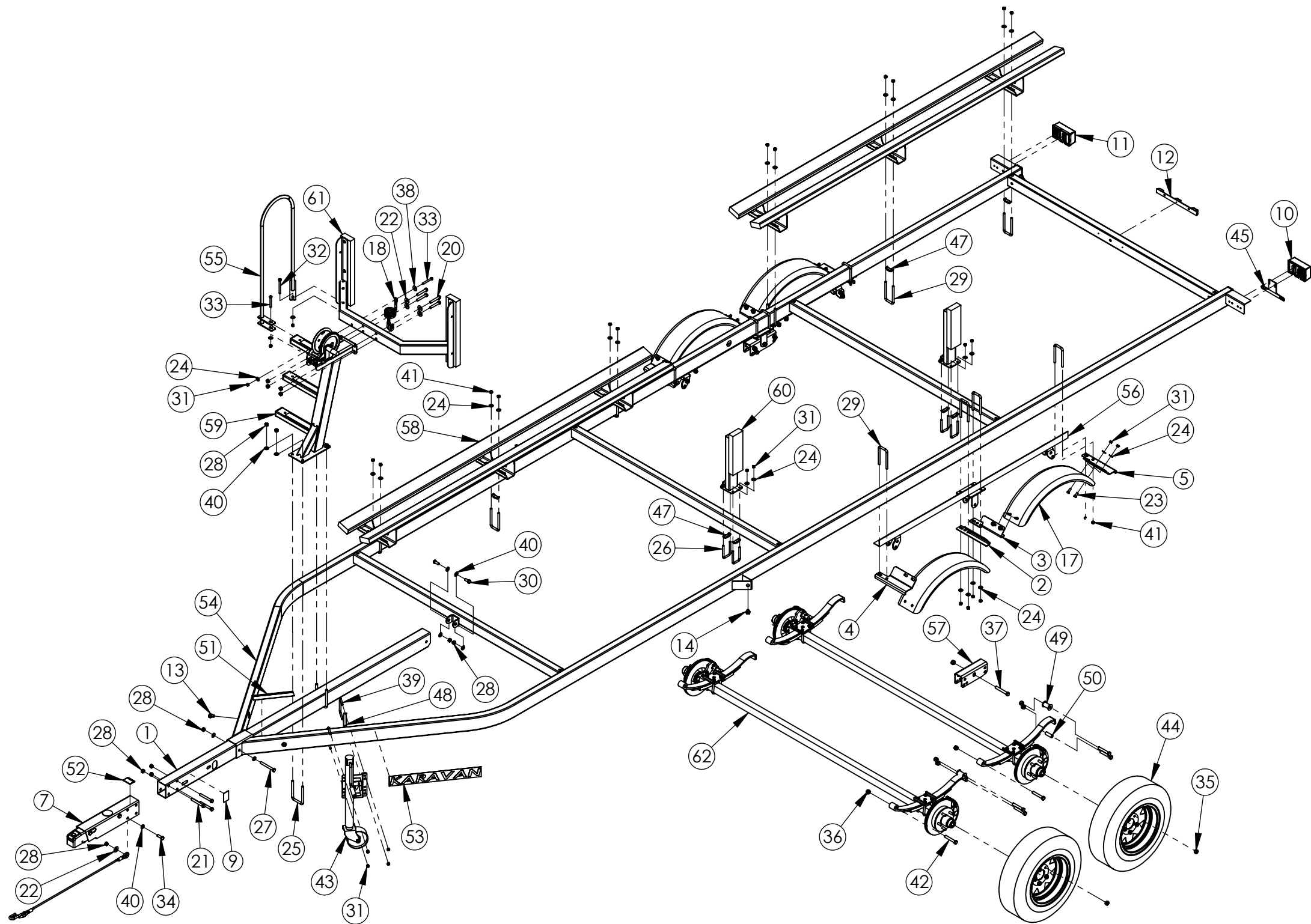
MATL:

SEE B.O.M.

FINISH:

N/A

DWG. #KDPT-2225-39-TDB-SPRING



ITEM NO.	SEE NOTES	PART NUMBER	DESCRIPTION	QTY.
1		100-02463	TONGUE TUBE	1
2		100-05436	FENDER BRACKET - RH	2
3		100-05437	FENDER BRACKET - LH	2
4		100-05634	FENDER BRACKET	2
5		100-05635	FENDER BRACKET	2
6	2	203-00105	BRAKE LINE	1
7		203-00108	ACTUATOR	1
8	2	203-00123	BRAKE LINE	1
9		205-00142	AMBER REFLECTOR TAPE	2
10		205-00161	TAIL LIGHT LH (LED)	1
11		205-00162	TAIL LIGHT RH (LED)	1
12		205-00176	I.D. BAR LIGHT SUBM.	1
13		205-00268	LIGHT AMBER CLEARANCE	2
14		205-00269	LIGHT AMBER CLEARANCE	2
15		205-00309	WIRE HARNESS	1
16		205-00310	WIRE HARNESS	2
17		206-00109	FENDER	4
18		208-00046	SAFETY CABLE & HOOK	1
19		208-00050	SAFETY CABLE AND HOOK	2
20		210-00012	.50"-13 X 3.00" HX HD BOLT	4
21		210-00014	.50"-13 X 4.00" HX HD BOLT	3
22		210-00017	.50" FLAT WASHER	6
23		210-00022	.375"-16 X 1.00" HX HD BOLT	16
24		210-00025	.375" FLAT WASHER	68
25		210-00030	.50"-13 X 3.063" X 5.25" U-BOLT	2
26		210-00031	.375"-16 X 2.031" X 3.75" U-BOLT	8
27		210-00040	.50"-13 X 4.50" HX HD BOLT	1
28		210-00061	.50"-13 CENTERLOCK HEX NUT	16
29		210-00068	.438"-14 X 2.25" X 5.31" U-BOLT	20
30		210-00072	.50"-13 X 1.25" HX HD BOLT	2
31		210-00076	.375"-16 CENTERLOCK HEX NUT	40
32		210-00080	.375"-16 X 4.00" HX HD BOLT	2
33		210-00089	.375"-16 X 3.00" HX HD BOLT	2
34		210-00120	.50"-13 X 1.50" HX HD BOLT	2
35		210-00137	LUG NUT - S.S.	20
36		210-00157	.563"-12 NYLOCK HEX NUT	14
37		210-00205	.563"-12 X 4.00" HX HD BOLT	2
38		210-00207	.375" FLAT WASHER	1
39		210-00231	.375"-16 X 3.00" X 4.06" U-BOLT	2
40		210-00240	.50" SAE FLAT WASHER ZINC	12
41		210-00330	.438"-14 CENTERLOCK HEX NUT	40
42		210-00459	.563"-12 X 3.25" HX HD BOLT	12
43		214-00019	TONGUE JACK 1200# TALL	1
44		220-00025	ST175/80D 13C	4
45		229-00006	LICENSE PLATE BRACKET	1
46	2	229-00245	.5" LOOM	1
47		229-00590	U-BOLT SEAT	20
48		229-00592	U-BOLT SEAT	2
49		229-00650	BUSHING	4
50		229-00672	BUSHING	4
51		234-00032	TRAILERING CHECKLIST	1
52		234-00078	DISC BRAKE LOGO	1
53		234-00174	LOGO	2
54		300-01611	FRAME WELDMENT	1
55		300-01673	HAND RAIL WELD	1
56		300-03203	SPRING HANGER WELDMENT	2
57		300-03627	EQUALIZER WELDMENT	2
58	1,3	310-01886	BUNK ASSEMBLY	4
59		310-02020	WINCH ASSY	1
60	1,3	310-02292	GUIDE-ON ASSY.	4
61	1,3	310-03397	WINCH BOARD ASSY	1
62		310-03458	AXLE ASSY	2

NOTES:

- 1.) SEE ADDITIONAL INSTRUCTIONS ON PAGE SEVEN.
- 2.) SEE ADDITIONAL INSTRUCTIONS ON PAGE FOUR.
- 3.) SEE OPTIONS ON PAGE THREE.
- 4.) AXLES ARE BUILT WITH CAMBER (SPINDLES WILL HAVE A SLIGHT DOWN SLOPE).
- 5.) IF AXLES CAN BE MOUNTED MORE THEN ONE WAY WELD TACKS ON THE ENDS OF AXLE TUBE, INDICATE TOP.

DWG. REV.	ECR/NDR NUMBER	REVISED BY	DATE	DESCRIPTION
E	16154	EMC	04-01-19	REPLACED 210-00017 WITH 210-00240 -2X
D	16108	JDM	10-24-18	REPLACED 300-01617 WITH 300-03203, 310-02017 WITH 310-03397, 310-02387 WITH 310-03458, 300-01977 WITH 300-01611, 229-00095 WITH 229-00650, ADDED 100-05436 -2X, 100-05437 -2X, 100-05634 -2X, 100-05635 -2X, 229-00672 -2X MORE CHANGES IN B.O.M.

ALL DIMENSIONS ARE IN INCHES UNLESS OTHERWISE STATED TOLERANCES EXCEPT AS NOTED

DECIMALS:

.X	±0.100
.XX	±0.060
.XXX	±0.030
.XXXX	±0.010

ANGLES:

±1°

ALL FORMED ANGLES EQUAL 90° UNLESS NOTED OTHERWISE

() INDICATES REFERENCE

THE INFORMATION IN THIS DRAWING IS THE SOLE PROPERTY OF KARAVAN TRAILERS, INC. ANY REPRODUCTION IN PART OR WHOLE WITHOUT THE WRITTEN PERMISSION OF KARAVAN TRAILERS, INC. IS PROHIBITED.

APPROVED BY:

DRAWN BY:

LUCAS WITTALA

DATE:

05-16-12

SHEET:

2 OF 8

SCALE:

N/A

KARAVAN

TITLE:

KDPT-2225-39-TDB-SPRING

MATL:

SEE B.O.M.

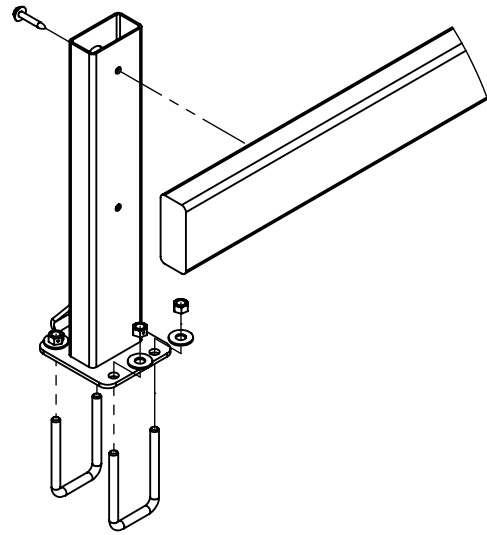
FINISH:

N/A

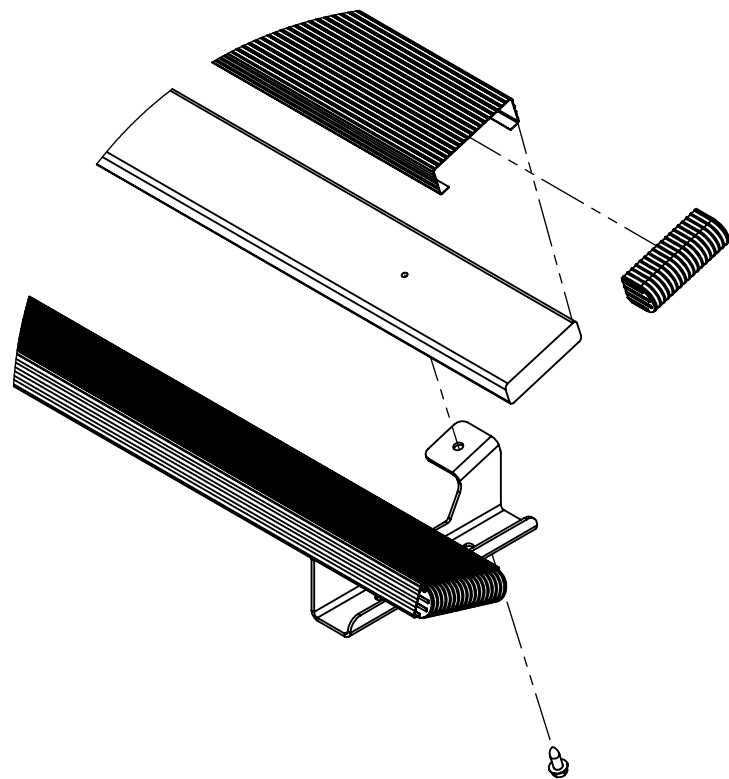
DWG. #

KDPT-2225-39-TDB-SPRING

HORIZONTAL GUIDE ON OPTION

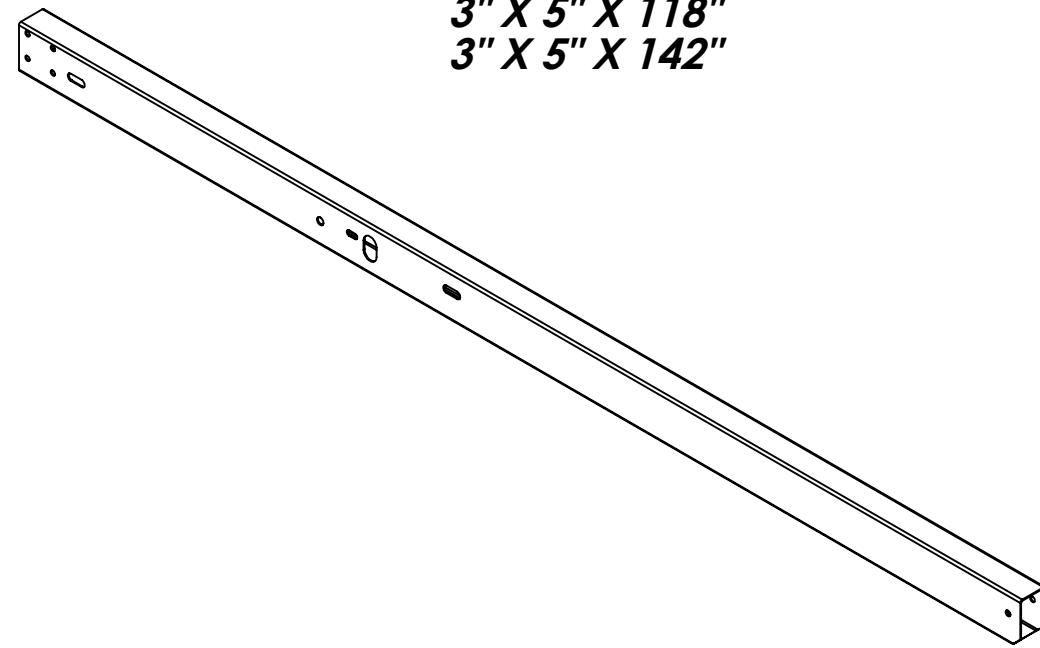


PLASTIC BUNK OPTIONS
2" X 4" X 108" (TWO PER SIDE)
2" X 6" X 108" (TWO PER SIDE)
2" X 6" X 120" (TWO PER SIDE)



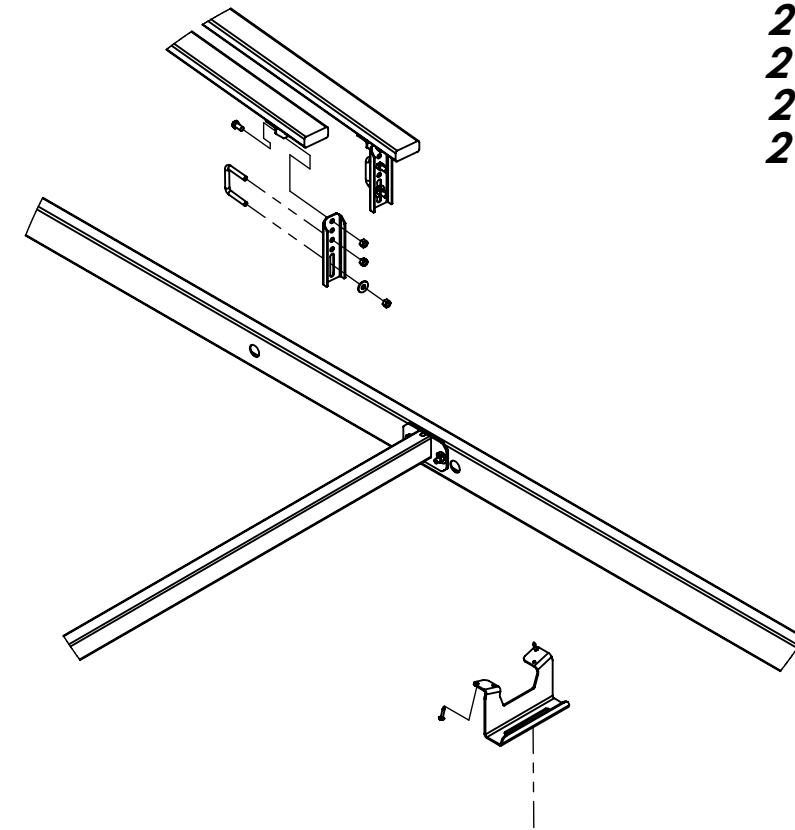
TONGUE TUBE OPTIONS

3" X 5" X 118"
3" X 5" X 142"



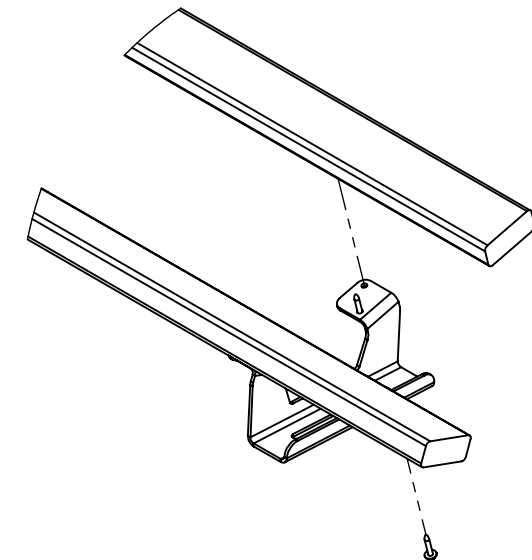
TRI-TOON KIT OPTION

2" X 4" CARPET
2" X 4" PLASTIC
2" X 6" CARPET
2" X 6" PLASTIC



CARPET BUNK OPTIONS

2" X 6" X 108" (TWO PER SIDE)
2" X 6" X 120" (TWO PER SIDE)



ALL DIMENSIONS ARE IN INCHES
 UNLESS OTHERWISE STATED
 TOLERANCES EXCEPT AS NOTED

DECIMALS:

.X ±0.100
 .XX ±0.060
 .XXX ±0.030
 .XXXX ±0.010

ANGLES:

±1°

ALL FORMED ANGLES
 EQUAL 90° UNLESS
 NOTED OTHERWISE

() INDICATES REFERENCE

THE INFORMATION IN THIS DRAWING IS THE SOLE
 PROPERTY OF KARAVAN TRAILERS, INC. ANY
 REPRODUCTION IN PART OR WHOLE WITHOUT
 THE WRITTEN PERMISSION OF KARAVAN TRAILERS,
 INC. IS PROHIBITED

APPROVED BY:

DRAWN BY:

LUCAS WITTALA

DATE:

05-16-12

SHEET:

3 OF 8

SCALE:

N/A

KARAVAN

TITLE:

KDPT-2225-39-TDB-SPRING

MATL:

SEE B.O.M.

FINISH:

N/A

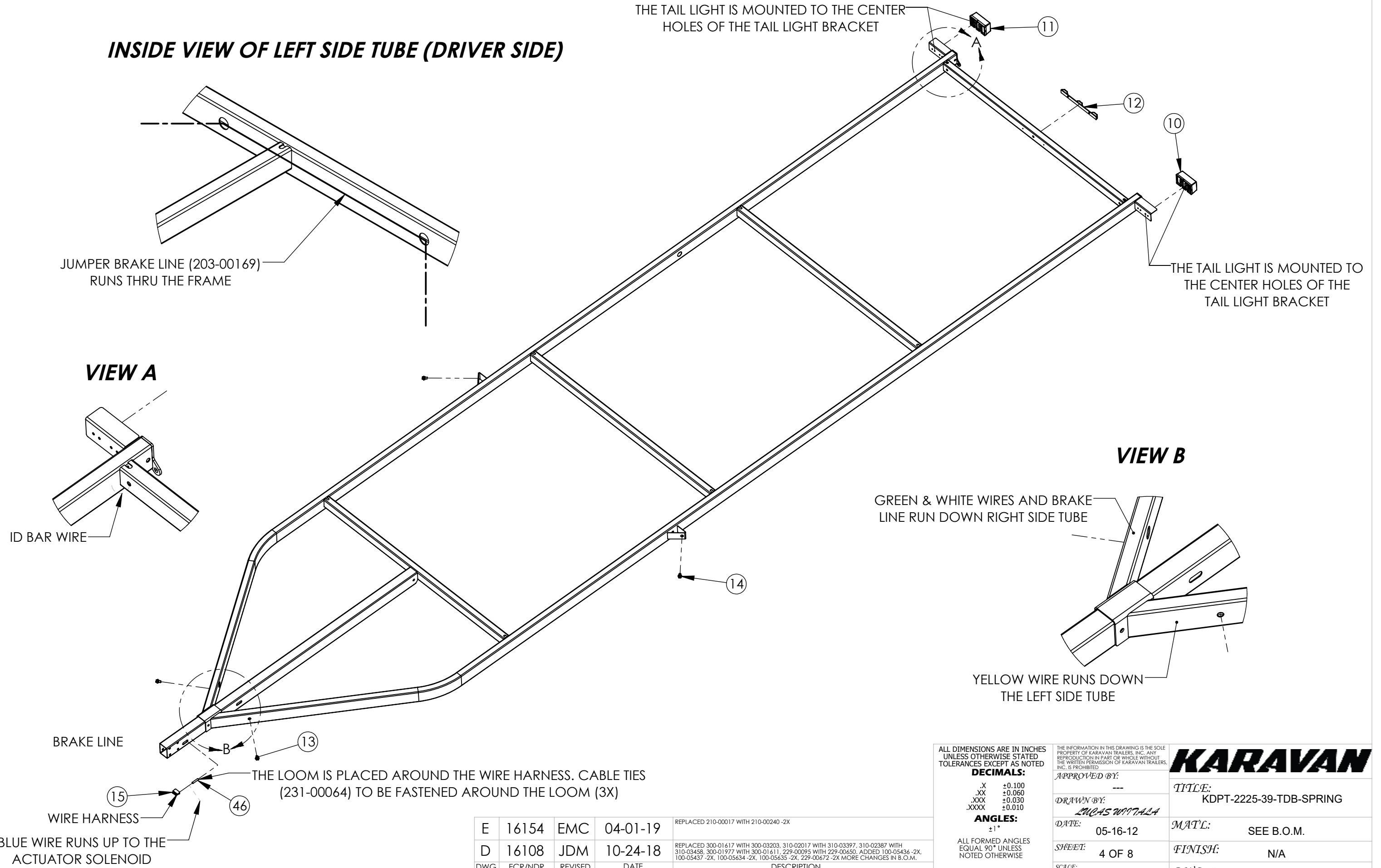
DWG. #

KDPT-2225-39-TDB-SPRING

DWG. REV.	ECR/NDR NUMBER	REVISED BY	DATE	DESCRIPTION
E	16154	EMC	04-01-19	REPLACED 210-00017 WITH 210-00240 -2X
D	16108	JDM	10-24-18	REPLACED 300-01617 WITH 300-03203, 310-02017 WITH 310-03397, 310-02387 WITH 310-03458, 300-01977 WITH 300-01611, 229-00095 WITH 229-00650, ADDED 100-05436 -2X, 100-05437 -2X, 100-05634 -2X, 100-05635 -2X, 229-00672 -2X MORE CHANGES IN B.O.M.

INSIDE VIEW OF LEFT SIDE TUBE (DRIVER SIDE)

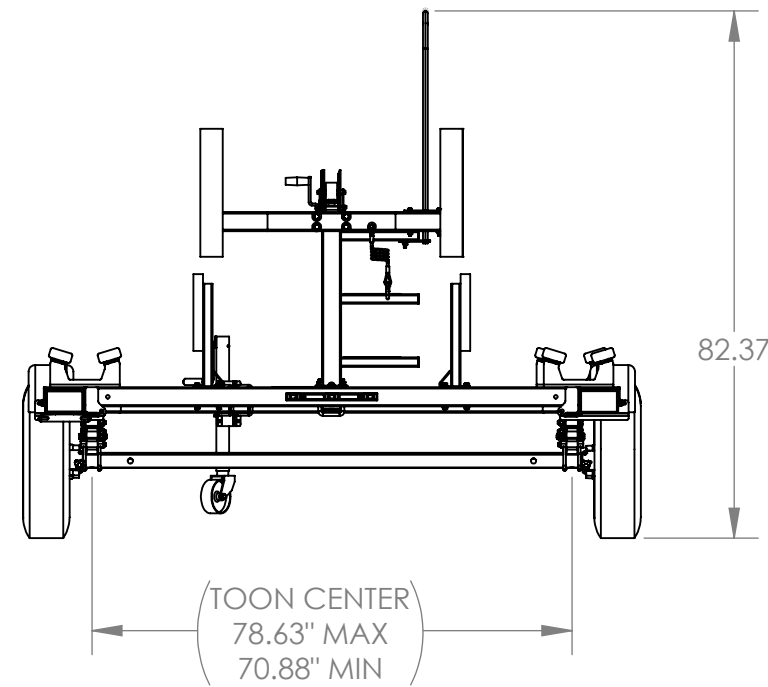
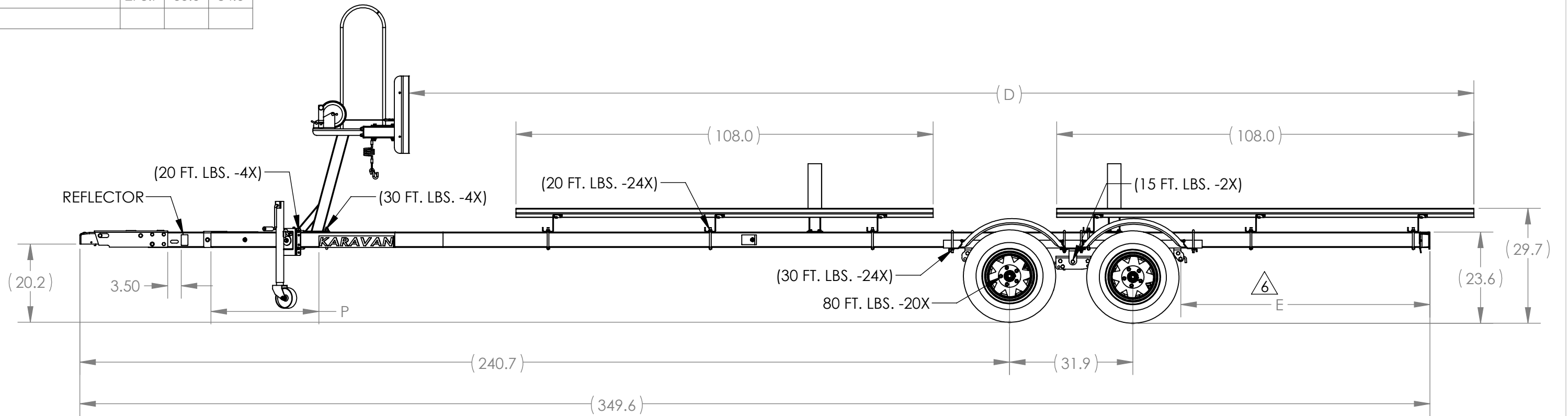
THE TAIL LIGHT IS MOUNTED TO THE CENTER HOLES OF THE TAIL LIGHT BRACKET



<p>ALL DIMENSIONS ARE IN INCHES UNLESS OTHERWISE STATED TOLERANCES EXCEPT AS NOTED</p> <p>DECIMALS: .X ±0.100 .XX ±0.060 .XXX ±0.030 .XXXX ±0.010</p> <p>ANGLES: ±1°</p> <p>ALL FORMED ANGLES EQUAL 90° UNLESS NOTED OTHERWISE</p> <p>() INDICATES REFERENCE</p>		<p>THE INFORMATION IN THIS DRAWING IS THE SOLE PROPERTY OF KARAVAN TRAILERS, INC. ANY REPRODUCTION IN PART OR WHOLE WITHOUT THE WRITTEN PERMISSION OF KARAVAN TRAILERS, INC. IS PROHIBITED.</p> <p>APPROVED BY: ---</p> <p>DRAWN BY: LUCAS WITTALA</p> <p>DATE: 05-16-12</p> <p>SHEET: 4 OF 8</p> <p>SCALE: N/A</p>		<p>KARAVAN</p> <p>TITLE: KDPT-2225-39-TDB-SPRING</p> <p>MATL: SEE B.O.M.</p> <p>FINISH: N/A</p> <p>DWG. #KDPT-2225-39-TDB-SPRING</p>	
--	--	---	--	---	--

DWG. REV.	ECR/NDR NUMBER	REVISED BY	DATE	DESCRIPTION
E	16154	EMC	04-01-19	REPLACED 210-00017 WITH 210-00240 -2X
D	16108	JDM	10-24-18	REPLACED 300-01617 WITH 300-03203, 310-02017 WITH 310-03397, 310-02387 WITH 310-03458, 300-01977 WITH 300-01611, 229-00095 WITH 229-00650, ADDED 100-05436 -2X, 100-05437 -2X, 100-05634 -2X, 100-05635 -2X, 229-00672 -2X MORE CHANGES IN B.O.M.

MODEL #	DIMENSIONS		
	"D"	"E"	"P"
*	275.7	60.0	34.0



NOTES:

△ DIMENSION IS FROM THE BACK OF THE SPRING HANGERS TO THE BACK OF THE FRAME.

7.) TORQUE CALLOUTS IN PARENTHESIS ARE FOR REFERENCE. TIGHTEN FASTENERS UNTIL PINCHED TIGHT (DO NOT OVER TIGHTEN BUNK PIVOT POINTS). MINOR DEFLECTION OF MATERIAL IS ACCEPTABLE

DWG. REV.	ECR/NDR NUMBER	REVISED BY	DATE	DESCRIPTION
E	16154	EMC	04-01-19	REPLACED 210-00017 WITH 210-00240 -2X
D	16108	JDM	10-24-18	REPLACED 300-01617 WITH 300-03203, 310-02017 WITH 310-03397, 310-02387 WITH 310-03458, 300-01977 WITH 300-01611, 229-00095 WITH 229-00650, ADDED 100-05436 -2X, 100-05437 -2X, 100-05634 -2X, 100-05635 -2X, 229-00672 -2X MORE CHANGES IN B.O.M.

ALL DIMENSIONS ARE IN INCHES UNLESS OTHERWISE STATED TOLERANCES EXCEPT AS NOTED

DECIMALS:

.X	±0.100
.XX	±0.060
.XXX	±0.030
.XXXX	±0.010

ANGLES:

±1°

ALL FORMED ANGLES EQUAL 90° UNLESS NOTED OTHERWISE

() INDICATES REFERENCE

THE INFORMATION IN THIS DRAWING IS THE SOLE PROPERTY OF KARAVAN TRAILERS, INC. ANY REPRODUCTION IN PART OR WHOLE WITHOUT THE WRITTEN PERMISSION OF KARAVAN TRAILERS, INC. IS PROHIBITED.

APPROVED BY:

DRAWN BY:

LUCAS MATALA

DATE:

05-16-12

SHEET:

5 OF 8

SCALE:

N/A

KARAVAN

TITLE:

KDPT-2225-39-TDB-SPRING

MATL:

SEE B.O.M.

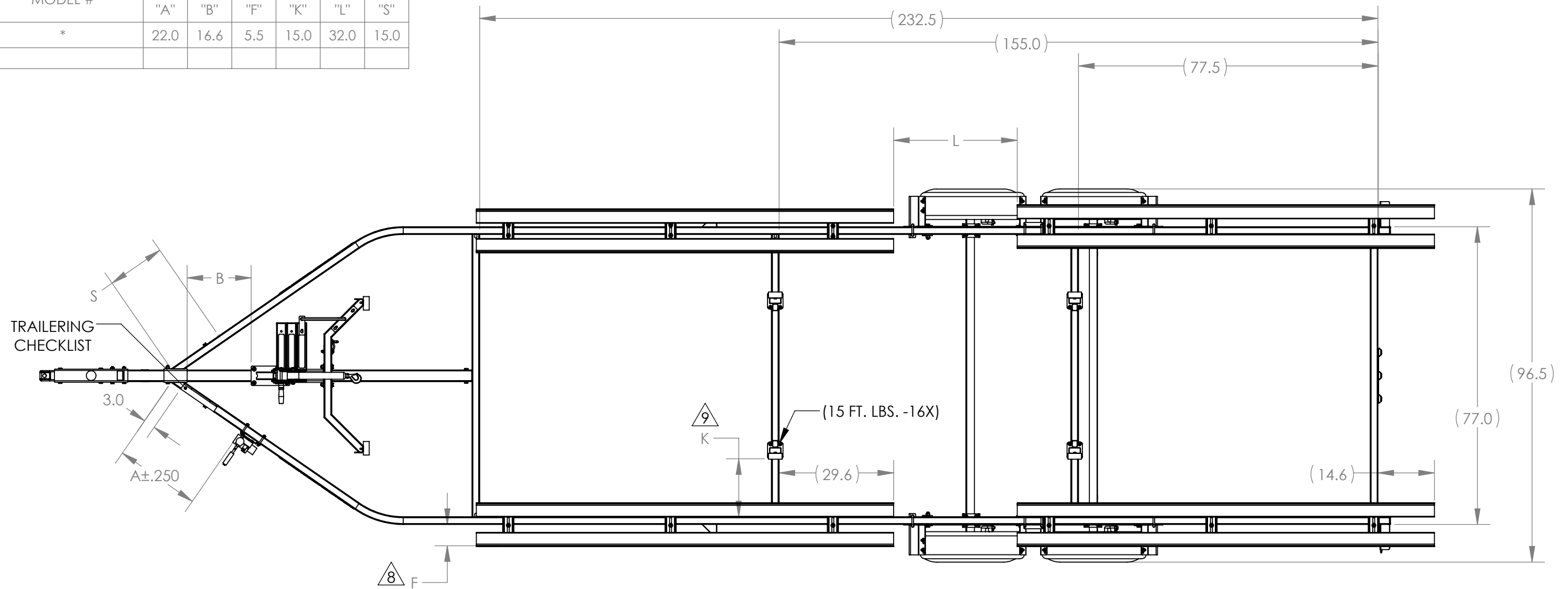
FINISH:

N/A

DWG. #

KDPT-2225-39-TDB-SPRING

MODEL #	DIMENSIONS					
	"A"	"B"	"F"	"K"	"L"	"S"
*	22.0	16.6	5.5	15.0	32.0	15.0



NOTES:

8 BUNK LOCATION IS THE DISTANCE FROM THE OUTSIDE OF THE SIDE TUBE TO THE OUTSIDE EDGE OF THE BUNK BRACKET.

9 GUIDE-ON LOCATION IS THE DISTANCE FROM THE INSIDE EDGE OF THE SIDE TUBE TO THE OUTSIDE EDGE OF THE GUIDE-ON BRACKET.

10.) "S" DIMENSION INDICATES SET LOCATION OF THE RIGHT EDGE OF THE PIN STAMPER.

DWG. REV.	ECR/NDR NUMBER	REVISED BY	DATE	DESCRIPTION
E	16154	EMC	04-01-19	REPLACED 210-00017 WITH 210-00240 -2X
D	16108	JDM	10-24-18	REPLACED 300-01617 WITH 300-03203, 310-02017 WITH 310-03397, 310-02387 WITH 310-03458, 300-01977 WITH 300-01611, 229-00095 WITH 229-00650, ADDED 100-05436 -2X, 100-05437 -2X, 100-05634 -2X, 100-05635 -2X, 229-00672 -2X MORE CHANGES IN B.O.M.

ALL DIMENSIONS ARE IN INCHES UNLESS OTHERWISE STATED TOLERANCES EXCEPT AS NOTED

DECIMALS:

.X	±0.100
.XX	±0.060
.XXX	±0.030
.XXXX	±0.010

ANGLES:

±1°

ALL FORMED ANGLES EQUAL 90° UNLESS NOTED OTHERWISE

() INDICATES REFERENCE

THE INFORMATION IN THIS DRAWING IS THE SOLE PROPERTY OF KARAVAN TRAILERS, INC. ANY REPRODUCTION IN PART OR WHOLE WITHOUT THE WRITTEN PERMISSION OF KARAVAN TRAILERS, INC. IS PROHIBITED.

APPROVED BY:

DRAWN BY:

LUCAS WITTALA

DATE:

05-16-12

SHEET:

6 OF 8

SCALE:

N/A

KARAVAN

TITLE:

KDPT-2225-39-TDB-SPRING

MATL:

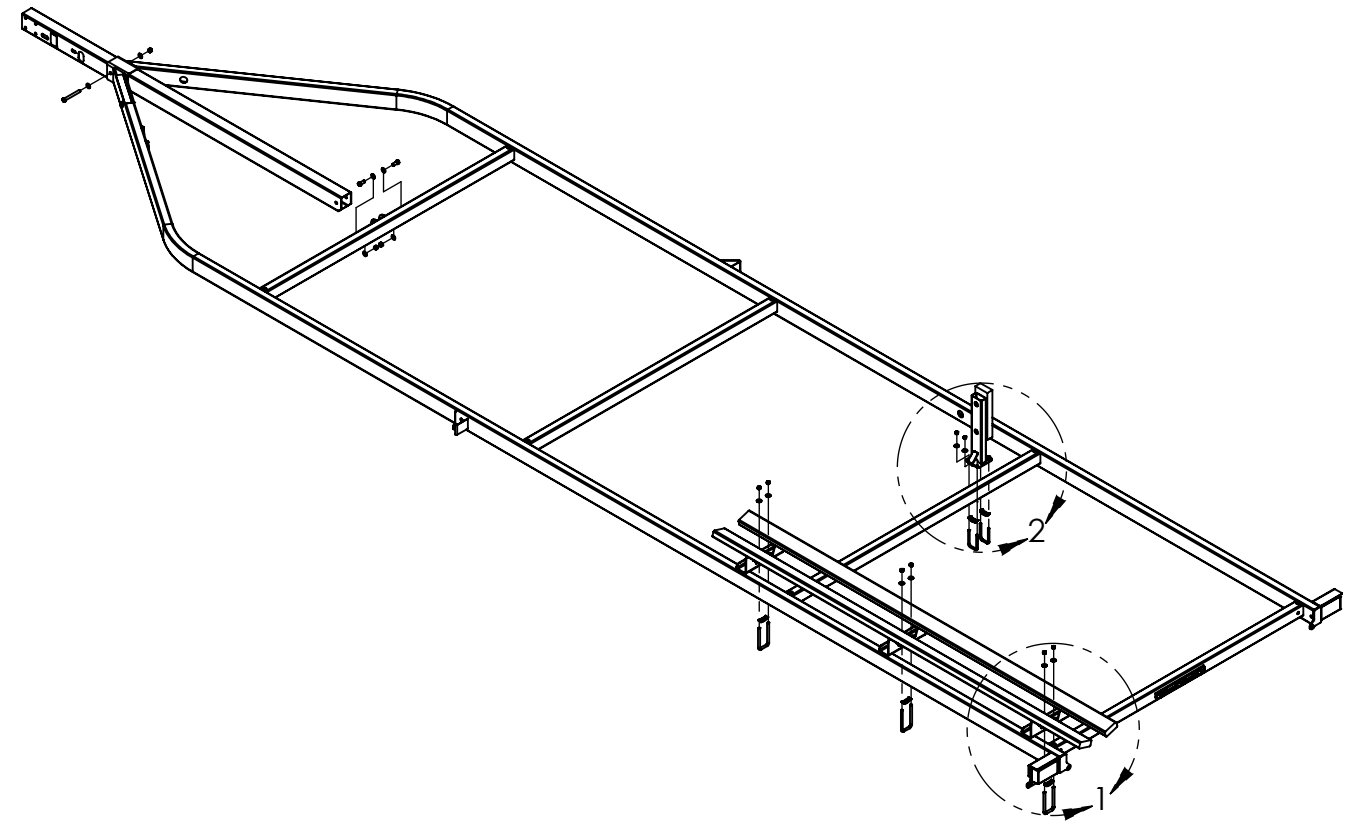
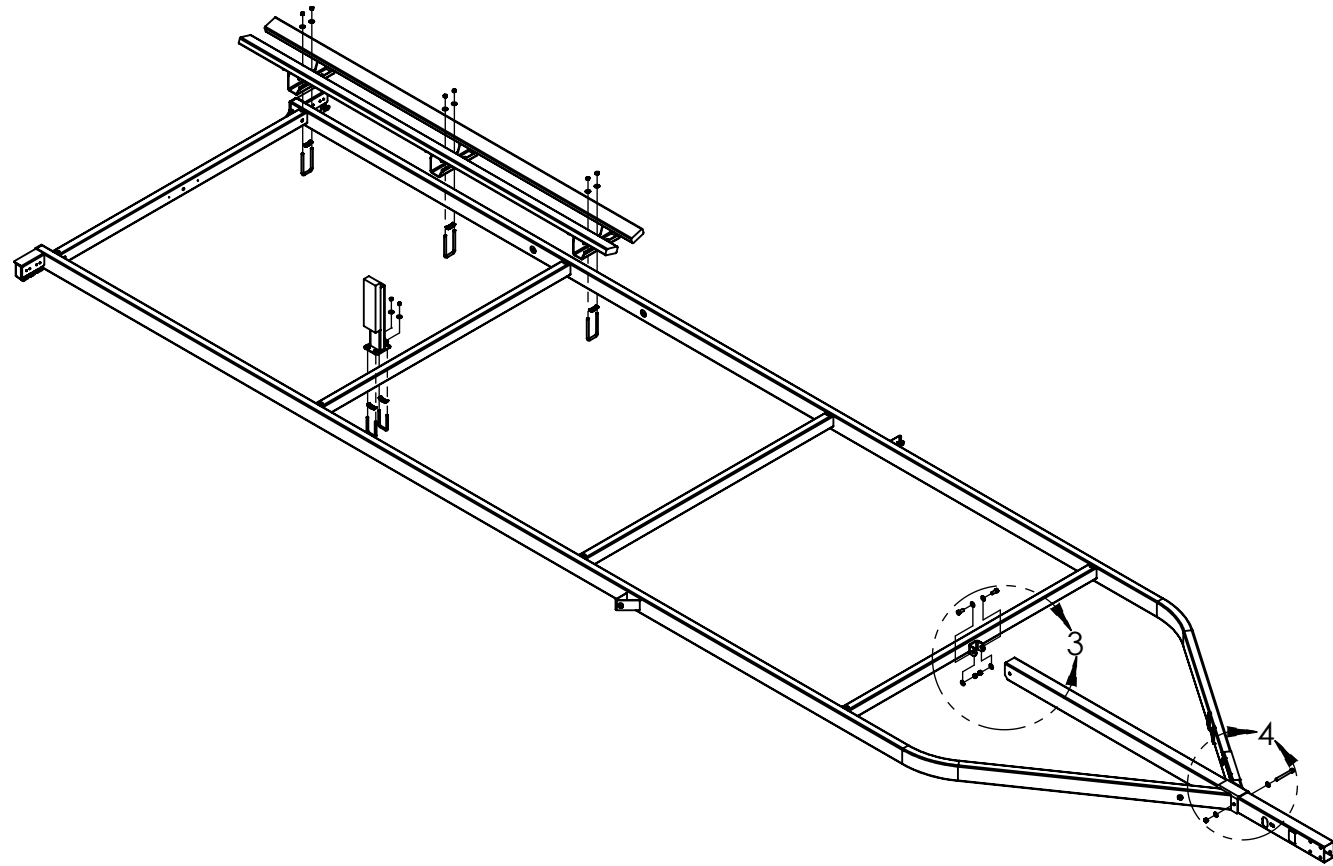
SEE B.O.M.

FINISH:

N/A

DWG. #

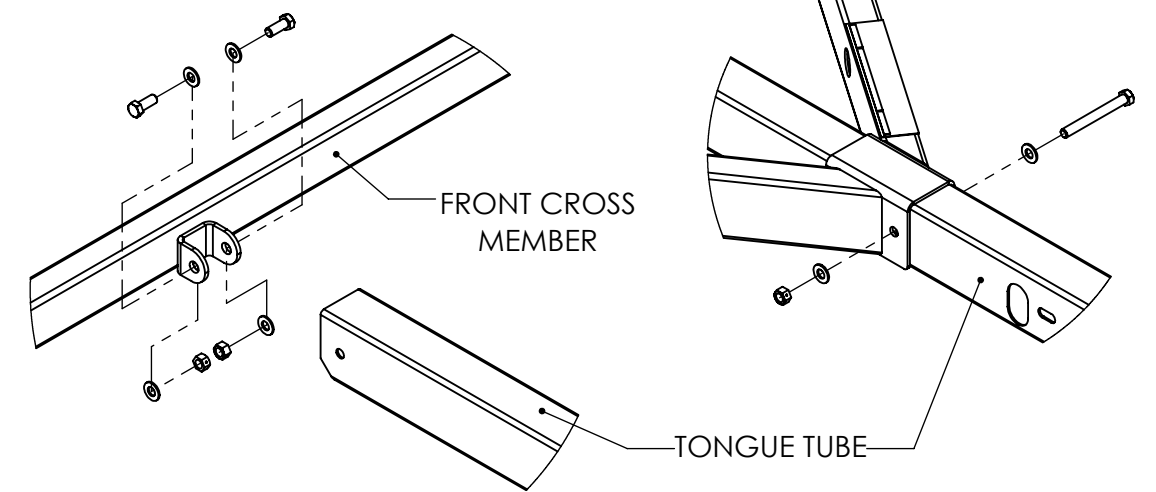
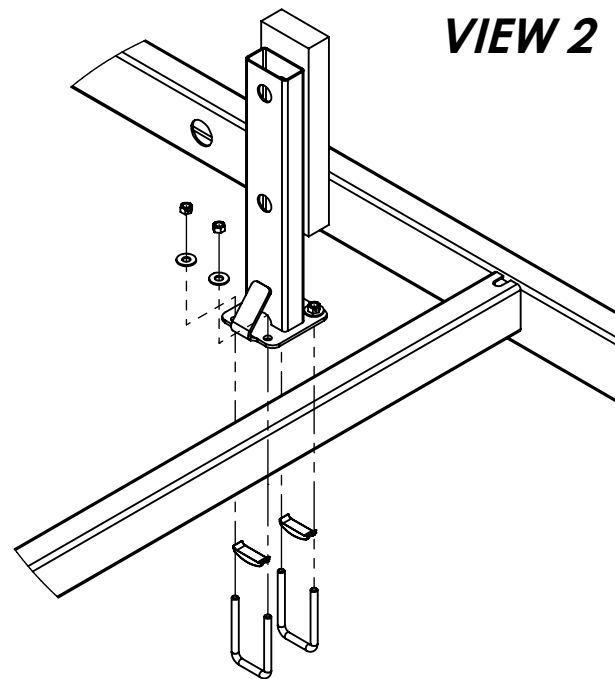
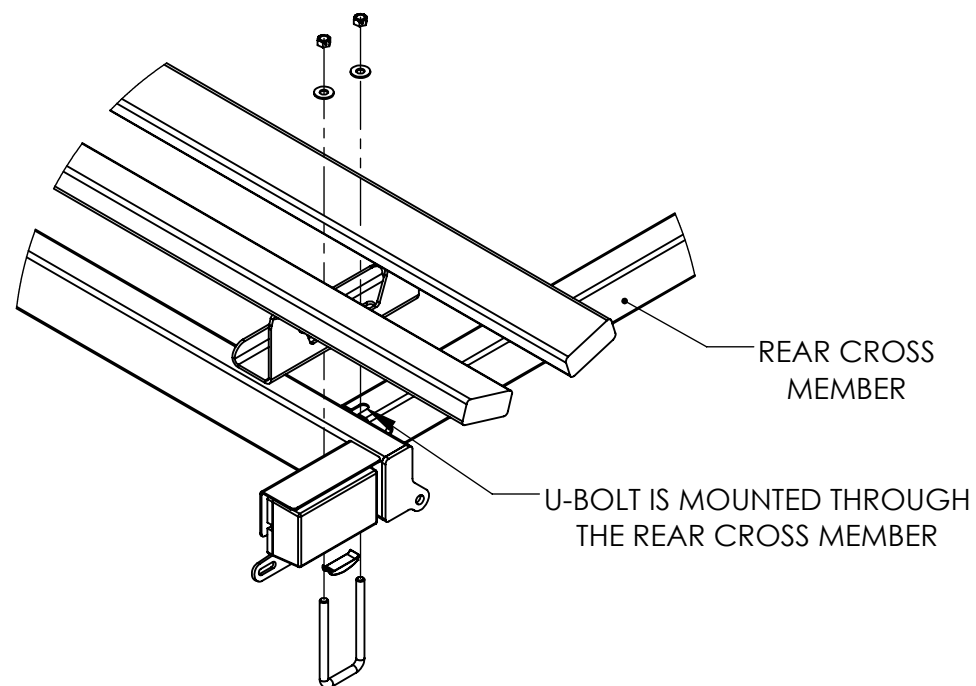
KDPT-2225-39-TDB-SPRING



BUNK MOUNTING INSTRUCTIONS
VIEW 1

GUIDE-ON MOUNTING INSTRUCTIONS
VIEW 2

TONGUE MOUNTING INSTRUCTIONS
VIEW 3 **VIEW 4**



DWG. REV.	ECR/NDR NUMBER	REVISED BY	DATE	DESCRIPTION
E	16154	EMC	04-01-19	REPLACED 210-00017 WITH 210-00240 -2X
D	16108	JDM	10-24-18	REPLACED 300-01617 WITH 300-03203, 310-02017 WITH 310-03397, 310-02387 WITH 310-03458, 300-01977 WITH 300-01611, 229-00095 WITH 229-00650. ADDED 100-05436 -2X, 100-05437 -2X, 100-05634 -2X, 100-05635 -2X, 229-00672 -2X MORE CHANGES IN B.O.M.

ALL DIMENSIONS ARE IN INCHES UNLESS OTHERWISE STATED TOLERANCES EXCEPT AS NOTED

DECIMALS:

.X ±0.100
.XX ±0.060
.XXX ±0.030
.XXXX ±0.010

ANGLES:

±1°

ALL FORMED ANGLES EQUAL 90° UNLESS NOTED OTHERWISE

() INDICATES REFERENCE

THE INFORMATION IN THIS DRAWING IS THE SOLE PROPERTY OF KARAVAN TRAILERS, INC. ANY REPRODUCTION IN PART OR WHOLE WITHOUT THE WRITTEN PERMISSION OF KARAVAN TRAILERS, INC. IS PROHIBITED.

APPROVED BY:

DRAWN BY:

LUCAS WITTALA

DATE:

05-16-12

SHEET:

7 OF 8

SCALE:

N/A

KARAVAN

TITLE:

KDPT-2225-39-TDB-SPRING

MATL:

SEE B.O.M.

FINISH:

N/A

DWG. #

KDPT-2225-39-TDB-SPRING

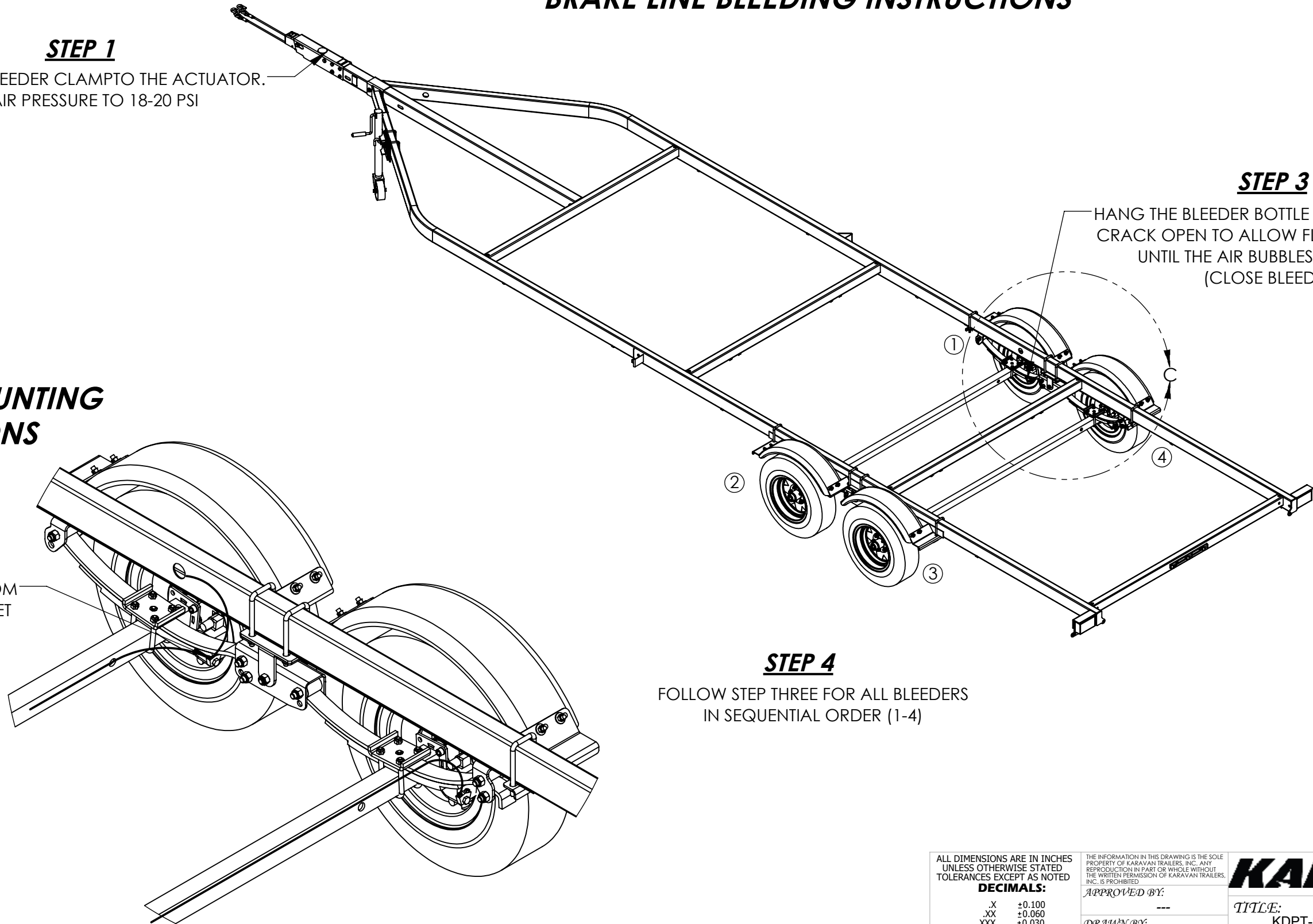
BRAKE LINE BLEEDING INSTRUCTIONS

STEP 1
HOOK THE BLEEDER CLAMP TO THE ACTUATOR.
SET AIR PRESSURE TO 18-20 PSI

STEP 3
HANG THE BLEEDER BOTTLE ON THE BLEEDER.
CRACK OPEN TO ALLOW FLUID TO RUN OUT
UNTIL THE AIR BUBBLES DISAPPEAR
(CLOSE BLEEDER)

BRAKE LINE MOUNTING INSTRUCTIONS

STEP 2
MAIN BRAKE LINE FROM TRAILER RUNS TO INLET
CLOSEST TO AXLE



STEP 4
FOLLOW STEP THREE FOR ALL BLEEDERS
IN SEQUENTIAL ORDER (1-4)

NOTES:

11.) ATTACH BRAKE LINE TO AXLE PRIOR TO BLEEDING LINES

DWG. REV.	ECR/NDR NUMBER	REVISED BY	DATE	DESCRIPTION
E	16154	EMC	04-01-19	REPLACED 210-00017 WITH 210-00240 -2X
D	16108	JDM	10-24-18	REPLACED 300-01617 WITH 300-03203, 310-02017 WITH 310-03397, 310-02387 WITH 310-03458, 300-01977 WITH 300-01611, 229-00095 WITH 229-00650, ADDED 100-05436 -2X, 100-05437 -2X, 100-05634 -2X, 100-05635 -2X, 229-00672 -2X MORE CHANGES IN B.O.M.

ALL DIMENSIONS ARE IN INCHES
UNLESS OTHERWISE STATED
TOLERANCES EXCEPT AS NOTED

DECIMALS:

.X ±0.100
.XX ±0.060
.XXX ±0.030
.XXXX ±0.010

ANGLES:

±1°

ALL FORMED ANGLES
EQUAL 90° UNLESS
NOTED OTHERWISE

() INDICATES REFERENCE

THE INFORMATION IN THIS DRAWING IS THE SOLE
PROPERTY OF KARAVAN TRAILERS, INC. ANY
REPRODUCTION IN PART OR WHOLE WITHOUT
THE WRITTEN PERMISSION OF KARAVAN TRAILERS,
INC. IS PROHIBITED

APPROVED BY:

DRAWN BY:

LUCAS MOTALA

DATE:

05-16-12

SHEET:

8 OF 8

SCALE:

N/A

KARAVAN

TITLE:

KDPT-2225-39-TDB-SPRING

MATL:

SEE B.O.M.

FINISH:

N/A

DWG. #KDPT-2225-39-TDB-SPRING